

Academic Year 2027

Entrance Examination Application Guidelines

**International Admissions
(Extract)**

Tokyo College of Music

1. Applicable Majors and Number of Students to be Admitted

Department of Music, Faculty of Music, Tokyo College of Music		
Applicable Major	Course and Instrument	No. of Students
Vocal Music Major	● Vocal Music	A small number of students
Instrumental Major	● Piano, Pianist Performance Course, Creation and Piano Performance Course, Harpsichord, Organ	
	● Violin, Viola, Cello, Double Bass, Harp, Classical Guitar	
	● Flute, Oboe, Clarinet, Bassoon, Saxophone	
	● Horn, Trumpet, Trombone, Tuba, Euphonium	
Composer and Conductor Major	● Percussion	
	● Composition (Artistic Music Course) ● Composition (Music Media Course) ● Conducting	
Music Culture and Education Major		
Music Liberal-Arts Major		
Wind Band Major		
Music Business and Technology Major		

* You may not apply to multiple majors at the same time.

2. Application Eligibility

Applicants must meet one of criteria 1 to 3, as well as meet both criteria 4 and 5.

No.	Spring Admission (all majors)	Fall Admission (Music Liberal-Arts Major only)
1.	Have graduated or will graduate from a high school or secondary school by March 2027	Have graduated or will graduate from a high school or secondary school by September 2027
2.	Have completed or will complete the third year of a technical school by March 2027	Have completed or will complete the third year of a technical school by September 2027
3.	<p>Possesses or will possess one of the following academic abilities equivalent to or higher than that of a high school graduate by March 31, 2027:</p> <p>(1) Have completed or will complete 12 years of school education abroad by March 31, 2027, or have been certified by the Minister of Education, Culture, Sports, Science and Technology of Japan to have equivalent academic abilities</p> <p>(2) Have completed or will complete a course at an overseas educational institution recognized by the Minister of Education, Culture, Sports, Science and Technology of Japan as having a curriculum equivalent to that of a high school by March 31, 2027</p> <p>(3) Have completed or will complete an advanced course at a designated vocational school by March 31, 2027</p>	<p>Possesses or will possess one of the following academic abilities equivalent to or higher than that of a high school graduate by September 30, 2027:</p> <p>(1) Have completed or will complete 12 years of school education abroad by September 30, 2027, or have been certified by the Minister of Education, Culture, Sports, Science and Technology of Japan to have equivalent academic abilities</p> <p>(2) Have completed or will complete a course at an overseas educational institution recognized by the Minister of Education, Culture, Sports, Science and Technology of Japan as having a curriculum equivalent to that of a high school by September 30, 2027</p> <p>(3) Have completed or will complete an advanced course at a designated vocational school by September 30, 2027</p>

	<p>(4) Completed a curriculum under the old education system</p> <p>(5) Possesses or will possess a foreign qualification for admission to university such as the International Baccalaureate, Abitur, Baccalaureate, GCE A level/International A level (each with a grade of E or higher in three or more subjects), or a European Baccalaureate by March 31, 2027</p> <p>(6) Have completed or will complete a 12-year curriculum at an educational institution accredited by an international certification organization (WASC, CIS, ACSI, NEASC, Cognia) by March 31, 2027</p> <p>(7) Successfully passed or are expected to pass the Upper Secondary School Equivalency Examination (formerly known as University Entrance Qualification Examination) by March 31, 2027</p>	<p>(4) Completed a curriculum under the old education system</p> <p>(5) Possesses or will possess a foreign qualification for admission to university such as the International Baccalaureate, Abitur, Baccalaureate, GCE A level/International A level (each with a grade of E or higher in three or more subjects), or a European Baccalaureate by September 30, 2027</p> <p>(6) Have completed or will complete a 12-year curriculum at an educational institution accredited by an international certification organization (WASC, CIS, ACSI, NEASC, Cognia) by September 30, 2027</p> <p>(7) Successfully passed or are expected to pass the Upper Secondary School Equivalency Examination (formerly known as University Entrance Qualification Examination) by September 30, 2027</p>
4.	Have a foreign nationality	
5.	Have a "Student" visa at the time of enrollment or a visa that allows for long-term stay (except for "Permanent Resident" visa)	

* Other than the above, those with a foreign nationality must meet the following criterion 6 if applying for Vocal Music Major, Instrumental Major, Composer and Conductor Major, Music Culture and Education Major, Wind Band Major, or Music Business and Technology Major.

6. Applicants must have passed the Japanese-Language Proficiency Test (JLPT) at the level of N2 or higher, or have obtained 200 points or higher in the "Japanese as a Foreign Language" section of the Examination for Japanese University Admission for International Students (EJU) (Reading Comprehension, Listening Comprehension and Listening-Reading Comprehension only; writing is not required) at the time of application.

* Applicants for the Music Liberal-Arts Major do not need to have a certificate of Japanese language proficiency as specified in "Application Eligibility 6" at the time of application. However, it is necessary to have sufficient Japanese proficiency to take classes and to live as a student at a Japanese university. By the time of enrollment, students must strive to obtain N2 or higher on the Japanese-Language Proficiency Test (JLPT) or 200 points or higher in the "Japanese as a Foreign Language" section of the Examination for Japanese University Admission for International Students (EJU) (Reading Comprehension, Listening Comprehension and Listening-Reading Comprehension only; writing is not required).

* Applicants cannot apply for more than one of the following entrance examinations in the same year: Comprehensive Selection (Schedule①), Comprehensive Selection (Schedule②), Designated School Recommendation Admission, Admission for Applicants over 25, International Admissions.

3. Examination Fee

Please complete the payment procedure on the online application site during the application period. Upon completion of payment, a payment confirmation will be sent to the applicant by email.

Major	Course and Instrument	Examination Fee
Vocal Music Major	● Vocal Music	38,000 JPY
Instrumental Major	● Piano, Pianist Performance Course, Creation and Piano Performance Course, Harpsichord, Organ	
	● Violin, Viola, Cello, Double Bass, Harp, Classical Guitar	
	● Flute, Oboe, Clarinet, Bassoon, Saxophone ● Horn, Trumpet, Trombone, Tuba, Euphonium	
	● Percussion	
Composer and Conductor Major	● Composition (Artistic Music Course) ● Composition (Music Media Course) ● Conducting	
Music Culture and Education Major		
Music Liberal-Arts Major		
Wind Band Major		
Music Business and Technology Major		20,000 JPY

4. Schedule

- The details of the examination venue and schedule will be sent by email at least three days before the first day of the test. Please refrain from making inquiries about the test date, time, and venue by phone or email.
- Applicants for the following majors will have a rehearsal with our college's piano accompanist during the entrance examination period: Instrumental Major (Violin, Viola, Cello, Double Bass), Music Liberal-Arts Major Program B (Violin, Viola, Cello, Double Bass).
- Applicants for the following majors will have an additional opportunity to practice with instruments at our college during the entrance examination period: Instrumental Major (Harpsichord, Organ), Music Liberal-Arts Major (Harpsichord, Organ).
- The results will be announced on the online application site. Inquiries by phone or email will not be accepted.

[Spring Admission]

Major	All majors
Application Period	September 4, 2026 (Fri)–September 11, 2026 (Fri) Postmark Deadline
Examination Period	October 2, 2026 (Fri)–October 4, 2026 (Sun)
Announcement of Results	November 2, 2026 (Mon) 15:00–November 4, 2026 (Wed) 17:00
Admission Procedure Period	November 5, 2026 (Thu)–November 12, 2026 (Thu) Postmark Deadline

[Fall Admission]

Major	Music Liberal-Arts Major (Schedule A)	Music Liberal-Arts Major (Schedule B)
Application Period	January 6, 2027 (Wed)–January 18, 2027 (Mon) Postmark Deadline	February 27, 2027 (Sat)–March 5, 2027 (Fri) Postmark Deadline
Examination Period	February 16, 2027 (Tue)–February 20, 2027 (Sat) *Note 1	March 16, 2027 (Tue)–March 17, 2027 (Wed) *Note 2
Announcement of Results	February 26, 2027 (Fri) 15:00–February 28, 2027 (Sun) 17:00	March 18, 2027 (Thu) 15:00–March 20, 2027 (Sat) 17:00
Admission Procedure Period	February 27, 2027 (Sat)–March 5, 2027 (Fri) Postmark Deadline	March 19, 2027 (Fri)–March 24, 2027 (Wed) Postmark Deadline

*Note 1: Some Music Liberal-Arts Major (Conducting) examinations for Schedule A may be held on February 21 (Sun).

*Note 2: Some examinations for Schedule B may be held on March 15 (Mon).

5. Application Procedures

(1) How to Apply

Only online applications are accepted. Please visit the “Application Guide” (出願ガイド) website below, which is also found on the college’s Japanese website under “Entrance Examination Information (Undergraduate Programs)” (入試案内 (学部)), and then follow the steps described in “Registration of Application Information” (出願情報の登録) to apply.

* Your application is complete once you have sent your application documents by post.

Please see the links below for our Application Guide and application documents.

Application Guide (出願ガイド)

<https://www.tokyo-ondai.ac.jp/webentry/>



(2) List of Documents to be Submitted

Send the following documents by Letter Pack Light (a service by Japan Post), attaching the mailing label to it or by a trackable express mailing service. Applicants residing outside Japan may also send a scanned copy of their application documents by email in advance if there is a possibility that the documents will not arrive in time. Please note, however, that we cannot accept the submission of application documents by email only.

Contact email: nyushi@tokyo-ondai.ac.jp

Please download and print application documents from “A. Online Application Site” or “B. Download Application Documents.”

(Access from “Online Application Site” in the “Application Guideline”)

A. Online Application Site (Web 出願サイト)
(user registration, registration of application information, printing of application forms and mailing label)

<https://lsg.mescius.com/tokyo-ondai/App/Account/login>



B. Download Application Documents (出願書類ダウンロードページ)

<https://www.tokyo-ondai.ac.jp/information/37540.php>



Application documents to be submitted		
1	Application form	Please print them from "A. Online Application Site".
2	Mailing label for the Japan Post Letter Pack service (for applicants residing in Japan)	
3	Program sheet (main practical exam)	Please print them from "B. Download Application Documents". Select the forms for <u>International Admissions</u> (外国人留学生選抜).
4	Program sheet (piano minor exam)	
5	Personal Data Sheet	
6	Curriculum vitae (C.V.)	
7	Letter of consent	
8	Application document checklist	
9	Performance video	
10	High school graduation certificate (or certificate of expected graduation)	
11	High school transcript	
12	Academic Transcript and Certificate of Attendance issued by Japanese language institutions	
13	Copy of passport	
14	Copy of Certificate of Residence in Japan or residence card	
15	Certificate of Japanese proficiency	
16	Certificate of English qualification	
17	Accompaniment score	
18	Original music score	
19	Copy of Certification Examination Certificate	

[Notes]

- * If applicants have any certificates or documents written in a foreign language (other than English), please attach a Japanese or English translation and a notarized document. We only accept notarized documents issued by public institutions such as embassies. Please refer to "(3) Notes on Submitting Graduation Certificates and Academic Transcripts" for information on how to submit your certificates.
- * We do not permit changes to the documents after the application has been submitted. In addition, we will not return the submitted documents and examination fee. However, if there is a change in your address, name, or phone number, please contact Admissions immediately.
- * Please be aware that we do not accept any additional or missing documents submitted after the application period.

(3) Notes on Submitting Graduation Certificates and Academic Transcripts

① Those who graduated from high school in China

[Graduation Certificate]

- Please submit an English "Verification Report of China Secondary Education Qualification Certificate" issued by the Center for Student Services and Development or the Japan Representative Office of the Center for Student Services and Development (<http://www.chsi.jp/>).
- Certificates issued by high schools and their translations are not accepted as application documents.
- Please make sure to have the "Verification Report of China Secondary Education Qualification Certificate" sent directly by email from CHSI to "nyushi@tokyo-ondai.ac.jp". Verification reports in languages other than English will be invalid. Certificates received by the applicant and then forwarded to the college will also be invalid.
- Please note that applications may not be accepted if the required documents cannot be submitted in time due to issuance delays by the certification body. As it generally takes about one month for the certificates to be issued, applicants are strongly advised to start preparations well in advance.
- In cases where the "Verification Report of China Secondary Education Qualification Certificate" cannot be obtained due to the nature of the educational system (e.g. international schools), the following documents must be submitted in its place: ① Graduation certificate issued by the applicant's high school, ② "Statement of Reasons for Non-Issuance of CHSI Verification Report of China Secondary Education Qualification Certificate" (CHSI 學歷認證報告書不発行申請書) designated by our college (can be downloaded from "B. Download Application Documents").
- Applicants who are expected to graduate from high school must submit a certificate of expected graduation issued by their high school at the time of application, and the "Verification Report of China Secondary Education Qualification Certificate" must be submitted after graduation.

[Academic transcripts]

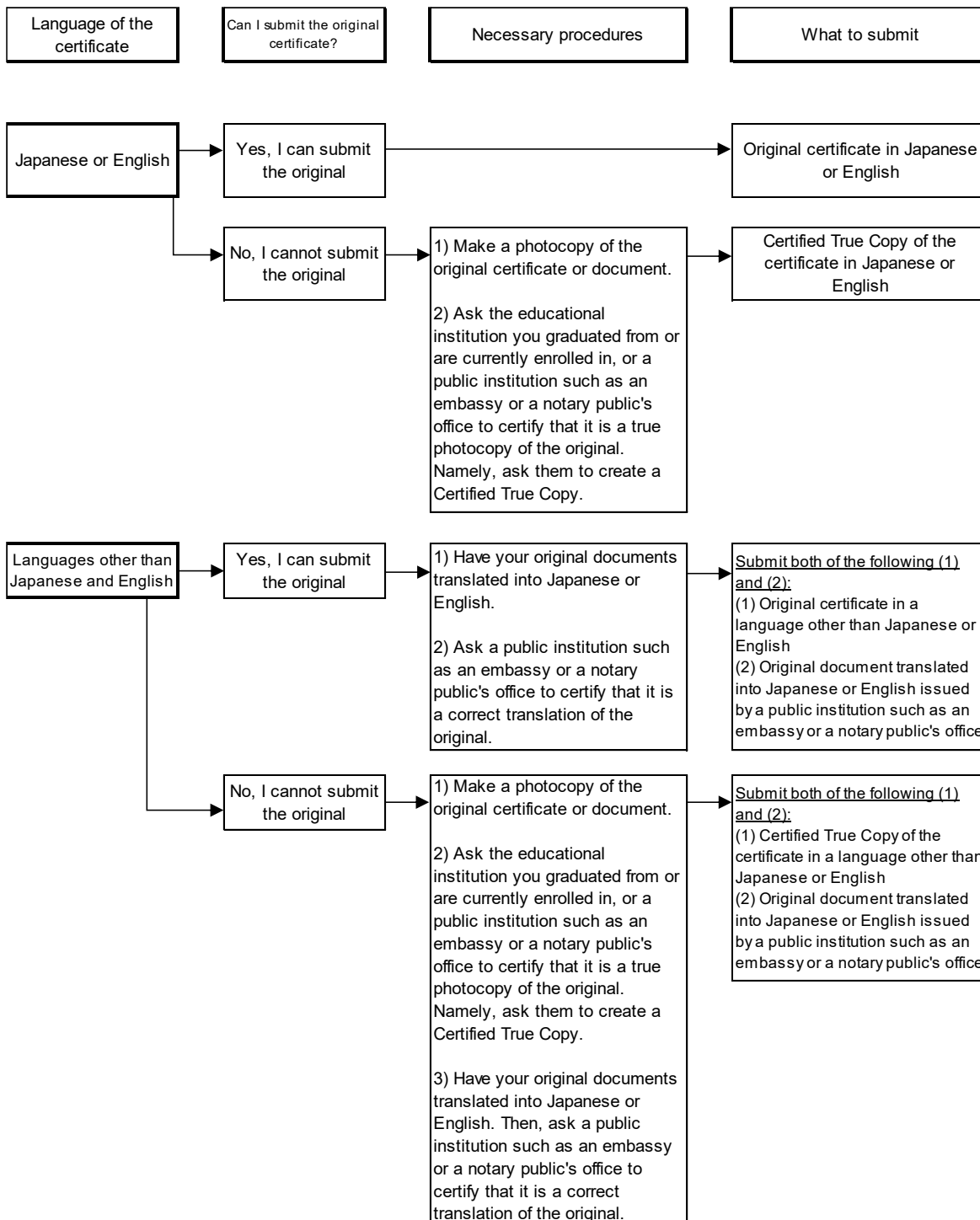
- Please submit the original academic transcript issued by your high school. The submission method is the same as for “② Those who graduated from a high school outside of China.”

② Those who graduated from a high school outside of China

- For certificates such as graduation certificates and academic transcripts, please submit the original documents issued and certified by the educational institution you graduated from or are currently enrolled in, or a Certified True Copy of your original documents issued by a public institution such as an educational institution, embassy, or a notary public’s office.

- Certificates written in a language other than Japanese or English must have a translation prepared by a public institution such as an embassy or a notary public’s office, or by a licensed translator. The translation must be attached to your original certificates.

- Please ensure that the name, date of birth, and other personal information on all submitted documents match what is stated on your passport.



(4) Submit the Documents to:

Admissions, Tokyo College of Music,
1-9-1 Kamimeguro, Meguro-ku, Tokyo 153-8622, Japan
Tel: +81-3-6455-2754

6. Examination Venue

- Tokyo College of Music Nakameguro · Daikan-yama Campus
(1-9-1 Kamimeguro, Meguro-ku, Tokyo)
- Tokyo College of Music, Ikebukuro Campus
(3-4-5 Minami-Ikebukuro, Toshima-ku, Tokyo)

<Access>



* For details on the examination venue and schedule, please refer to the information sent to you by email.

7. Tuition and Other Payments

Please see the following link for information on tuition fees at the college:

<https://www.tokyo-ondai.ac.jp/about/expenses>



8. Scholarships and Financial Support

Please see the following link for information on scholarships and financial support at the college:

<https://www.tokyo-ondai.ac.jp/information/12765.php>



9. Acquiring a “Student” Status of Residence

(1) Applicants with a valid status of residence in Japan

① Applicants with a “Student” status of residence

You must submit an “**Application for Extension of Period of Stay**” to Tokyo Regional Immigration Services Bureau. Applications can be submitted up to three months before the current period of stay expires. Please note that if you stay for three months or longer without engaging in activities permitted by your residence status, your status will be revoked.

In addition, if there is a change in the institution you are enrolled in, you are required to submit a “Notification of the Accepting Organization” to Tokyo Regional Immigration Services Bureau within 14 days of the change even if your period of stay continues after you enroll in the college.

② Applicants currently residing in Japan with a status of residence other than “Student” who wish to obtain a “Student” status of residence

You must submit an “**Application for Change of Status of Residence**” to Tokyo Regional Immigration Services Bureau. Upon completing the enrollment procedure, the college will issue a “Letter of Admission”. You can use this “Letter of Admission” to change your residence status while in Japan. However, applicants who have entered Japan with a “Temporary Visitor” status are not permitted to change their residence status while in Japan. In such cases, it may be necessary to leave Japan once to acquire a “Student” visa.

③ Applicants with a long-term status of residence other than “Student”

Applicants who hold a long-term status of residence such as “Long-Term Resident” or “Dependent” are not required to change their status to “Student.” However, please note that such statuses do not allow applicants to apply for various subsidy programs for international students or to register for classes for international students at the college. Applicants are therefore advised to renew or change their residence status as necessary.

If you wish to renew or change your status of residence, the application method and required documents will vary depending on your current status of residence. Please inquire at your nearest immigration bureau for details.

[Important notes]

● Applicants who have previously been enrolled in Japanese language institutions or specialized training colleges in Japan (e.g. Japanese language schools, Japanese language courses at universities or junior colleges, or professional training colleges) before enrolling at the college will be required by the Tokyo Regional Immigration Services Bureau to submit a certificate of attendance issued by the educational institution they were enrolled in when applying for an extension of their period of stay or a change of status of residence. Please note that if there is a problem with your enrollment status, your application may be denied.

(2) Applicants without a valid status of residence in Japan

You must apply for a "Student" visa at the Japanese Embassy or consulate in your home country. The visa application process will be smoother if you or your proxy obtains a "Certificate of Eligibility (COE)" from the Tokyo Regional Immigration Services Bureau in advance and submit it when applying for a "Student" visa. If you have relatives, financial supporters, or scholarship providers in Japan, please ask them to apply for the "Certificate of Eligibility" on your behalf. If you would like the college to apply on your behalf, please submit the necessary documents provided during the admission procedure period. Detailed information will be sent to successful applicants together with other enrollment documents.

[Important notes]

- It typically takes approximately two to three months to obtain a "Certificate of Eligibility (COE)", and about three weeks to one month for a "Student" visa to be issued at a Japanese embassy or consulate abroad after obtaining the COE.

Depending on the entrance examination schedule and the timing of enrollment procedures, issuance of visa may not be possible by the start of classes, which could result in a delay in traveling to Japan. Make sure to take the time required for visa application into consideration when applying to the college.

Additionally, there is a possibility that you will be unable to travel to Japan by the time of enrollment, or that you will need to return to your home country temporarily after enrollment if your visa does not get issued by the start of your studies. In such cases, you may miss classes which can affect your ability to earn credits, and you may incur significant travel expenses as well.

- The approval or rejection of the application for visa is at the sole discretion of the Ministry of Justice, and as such the college cannot be held liable for any losses or inconveniences if your application is denied.

- Financial support and most scholarships for international students are only available to those with a "Student" status of residence.

10. Examination Subjects

Examination Subject		English (Qualification)	English (Examination Conducted by the College)	Mathematics	Practical Exam	Short Essay (Note 3)	Interview and Oral Examination (Note 4)	Interview	Piano Minor Exam	Chorubungen	Sight-singing (Note 5)	Sight-reading	Music Dictation (Four-part Harmony and Melody) (Note 5)	Music Dictation (Chord and Melody) (Note 5)	Creation	Remarks
Major and Course	Allocation of points	(Note 1)	(Note 2)	100 points each				ABC (3 levels)	50 points each						ABC (3 levels)	
Vocal Music	Vocal Music	Choice (1)	Choice (1)		✓	✓		✓	✓	✓	Choice (2)		Choice (2)		✓	
Instrumental	Piano, Pianist Performance Course	Choice (1)	Choice (1)		✓	✓		✓			✓			✓	✓	
	Creation and Piano Performance Course	Choice (1)	Choice (1)		✓	✓		✓			✓			✓	✓	Practical Exam is the piano assignment of Creation and Piano Performance Course
	Harpischord	Choice (1)	Choice (1)		✓	✓		✓			✓			✓	✓	
	Organ	Choice (1)	Choice (1)		✓	✓		✓	✓		✓			✓	✓	
	Strings, Wind and Percussion	Choice (1)	Choice (1)		✓	✓		✓	✓		✓			✓	✓	
Composer and Conductor	Composition (Artistic Music Course)	Choice (1)	Choice (1)		✓	✓			✓		✓			✓	✓	Interview is included in the practical test by major
	Composition (Music Media Course) (Note 6)	Choice (1)	Choice (1)		✓						✓		✓			Short essay and interview are included in the practical test by major
	Conducting	Choice (1)	Choice (1)		✓				✓		✓			✓	✓	Short essay and interview are included in the practical test by major
Music Culture and Education		Choice (1)	Choice (1)		✓	✓	✓				Choice (2)		Choice (2)		Choice (2)	
Music Liberal-Arts		Choice (1)	Choice (1)		✓		✓									
Wind Band Major		Choice (1)	Choice (1)		✓	✓	✓		Choice (2)		Choice (2)	Choice (2)	Choice (2)		✓	
Music Business and Technology		Choice (1)	Choice (1)	Choice (1)		✓	✓									

For details on the entrance examination subjects for each major, please refer to the International Admissions Application Guidelines (Japanese version).

*** For the “Choice” subject, applicants must select one subject from the “Choice” subject with the same number (i.e. one of Choice (1) and one of Choice (2) for each major. However, for the Music Culture and Education Major, applicants must select two subjects from Choice (2), in addition to one from Choice (1).**

[Note 1] The college will make its own conversion based on the CEFR comparison table published by the Ministry of Education, Culture, Sports, Science and Technology.

[Note 2] 100 points will be allotted for majors in Music Culture and Education, Music Liberal-Arts, and Music Business and Technology. 50 points will be allotted for other majors.

[Note 3] ♦ Majors in Vocal Music, Instrumental, Composer and Conductor (Composition (Artistic Music Course)), Wind Band: Short essay in Japanese (common theme)

♦ Majors in Music Culture and Education, Composer and Conductor (Composition (Music Media Course), Conducting), Music Business and Technology: Short essay with a theme given by each major

[Note 4] The content of the interview and oral examination varies depending on the major.

[Note 5] Those who passed the certification examination held at one of the college’s College Preparatory Programs this year will be exempt from taking the corresponding subjects in the entrance examination.

[Note 6] Those who have been certified in the college’s Music Media Prep Course this year will be exempt from taking one or both of the “Harmony” and “Accompaniment” subjects in the entrance examination.

11. List of Accepted English Qualifications and Proficiency Tests

As an alternative to the English examination conducted by the college, you may use any of the qualifications below.

You will need to submit one original copy of the relevant qualification examination certificate at the time of application. The timing of acquisition is not restricted. However, please beware that examination administration organizations may set a validity period or a deadline for reissuing official certificates. Make sure to confirm if any of the above applies to you if you do not have the original certificate on hand.

Qualification/Test	Score	
	Vocal Music, Instrumental, Composer and Conductor, Music Culture and Education, Wind Band, Music Business and Technology Majors	Music Liberal-Arts Major
Cambridge English Test	120 or higher	140 or higher
EIKEN Test in Practical English Proficiency (including S-CBT)	Grade Pre-2 or higher	Grade 2 or higher
GTEC (excluding assessment version)	680 or higher	930 or higher
IELTS (Academic)*	4.0 or higher	4.5 or higher
TEAP	135 or higher	225 or higher
TOEFL iBT®*	2.5 or higher (Obtained on or after 21 January 2026) 42 or higher (Obtained on or before 20 January 2026)	3.5 or higher (Obtained on or after 21 January 2026) 52 or higher (Obtained on or before 20 January 2026)
TOEIC® (L&R/S&W) (public test only) **	625 or higher	1150 or higher
TOEIC Bridge® (L&R/S&W) (public test only) *	129 or higher	170 or higher

* Electronic score reports are also accepted for IELTS and TOEFL iBT.

** For TOEIC and TOEIC Bridge (L&R/S&W), multiply the S&W score by 2.5 and add together.